



RENOVATED OFFICE. MALDEN ORANGE LINE  ACCESSIBLE.

## THE GATEWAY

14 SUMMER STREET MALDEN, MA

ATTACHED MULTI-STORY PARKING GARAGE. ONSITE  
MANAGEMENT. NUMEROUS NEARBY AMENITIES:  
BREWERIES, RESTAURANTS, SHOPPING, YOGA.  
NEW LED LIGHTING. RENOVATED COMMON AREAS.

Burgess Properties, LLC  
Steve Nohrden  
Steve@BurgessProperties.com

[www.BurgessProperties.com](http://www.BurgessProperties.com)



BURGESS  
PROPERTIES

 Equity Residential



**BURGESS**  
PROPERTIES

As Exclusive Agent for Equity Residential, Burgess Properties, LLC is pleased to present the opportunity to lease high-quality office space located across the street from the Malden MBTA T Stop (Orange Line) and Commuter Rail.



**SPACES  
AVAILABLE:**

**SECOND FLOOR**

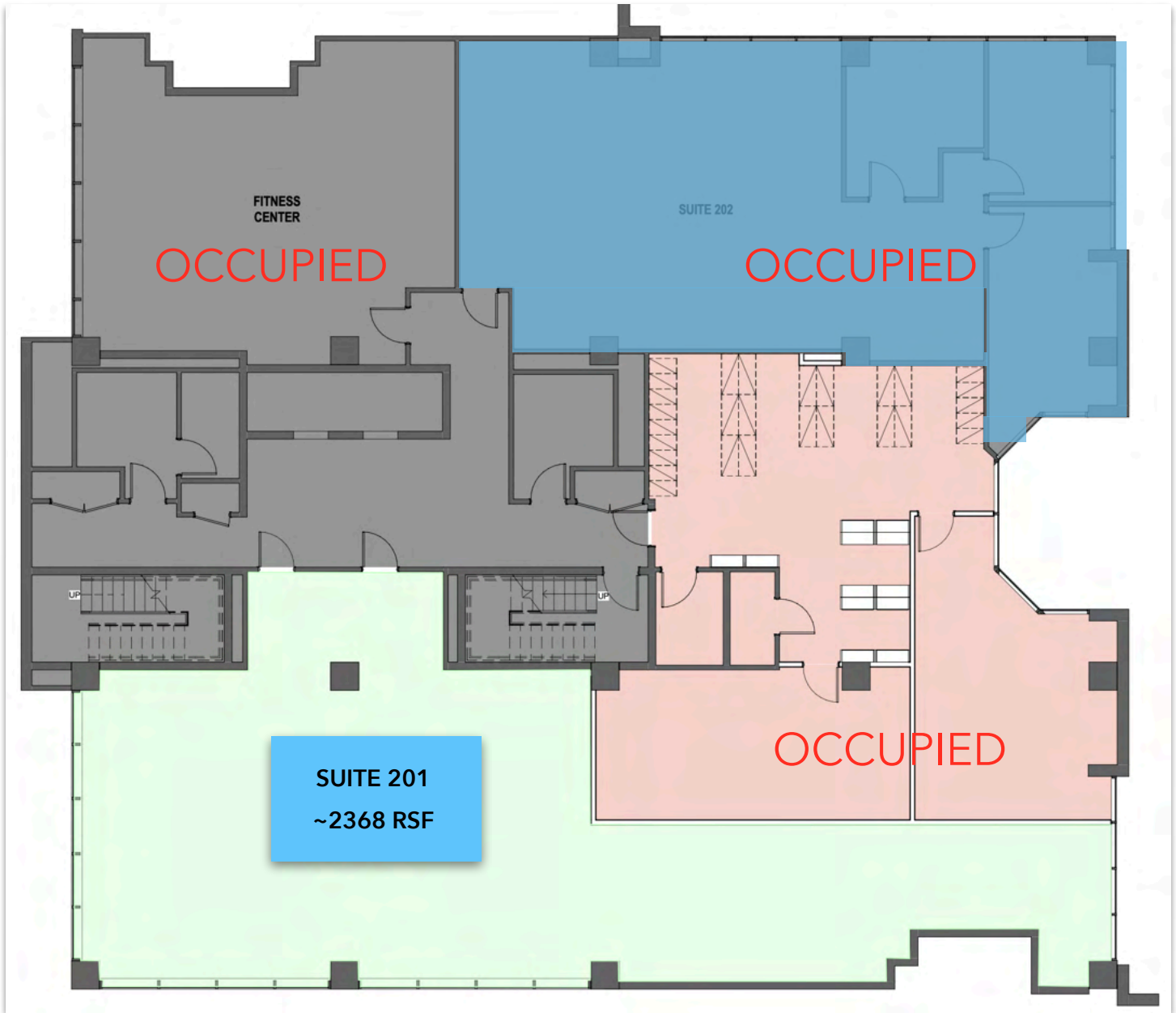
+/- 2,368 SF

**FOURTH FLOOR**

+/- 2,620 SF

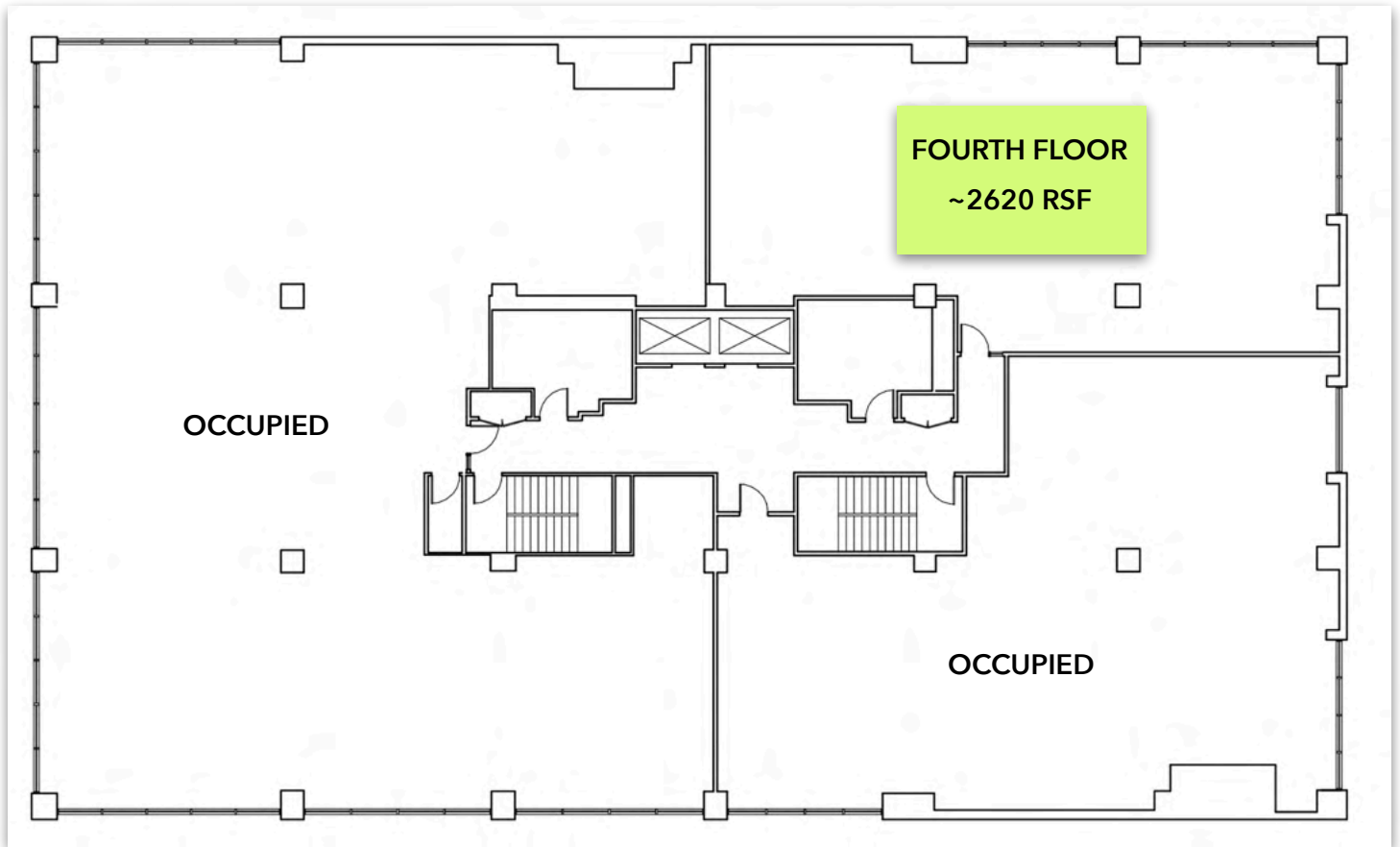


# SECOND FLOOR PLAN





## FOURTH FLOOR PLAN



Information contained herein is from sources deemed reliable, however no guarantee is provided as to the accuracy thereof and is subject to change without notice. Information contained herein is confidential and any use, distribution, copying or disclosure by anyone unauthorized is strictly prohibited.

Steve Nohrden, President  
[Steve@BurgessProperties.com](mailto:Steve@BurgessProperties.com)

