



RENOVATED OFFICE. MALDEN ORANGE LINE  ACCESSIBLE.

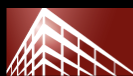
THE GATEWAY

14 SUMMER STREET MALDEN, MA

ATTACHED MULTI-STORY PARKING GARAGE. ONSITE
MANAGEMENT. NUMEROUS NEARBY AMENITIES:
BREWERIES, RESTAURANTS, SHOPPING, YOGA.
NEW LED LIGHTING. RENOVATED COMMON AREAS.

Burgess Properties, LLC
Steve Nohrden
Steve@BurgessProperties.com

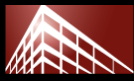
www.BurgessProperties.com



BURGESS
PROPERTIES



Equity Residential



B U R G E S S
P R O P E R T I E S

As Exclusive Agent for Equity Residential, Burgess Properties, LLC is pleased to present the opportunity to lease high-quality office space located across the street from the Malden MBTA T Stop (**Orange Line**) and Commuter Rail.



**SPACES
AVAILABLE:**

SECOND FLOOR

+/- 2,040 SF

THIRD FLOOR

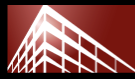
+/- 2,786 SF

FOURTH FLOOR

+/- 2,620 SF

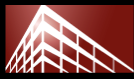
SECOND FLOOR

+/- 2,368 SF

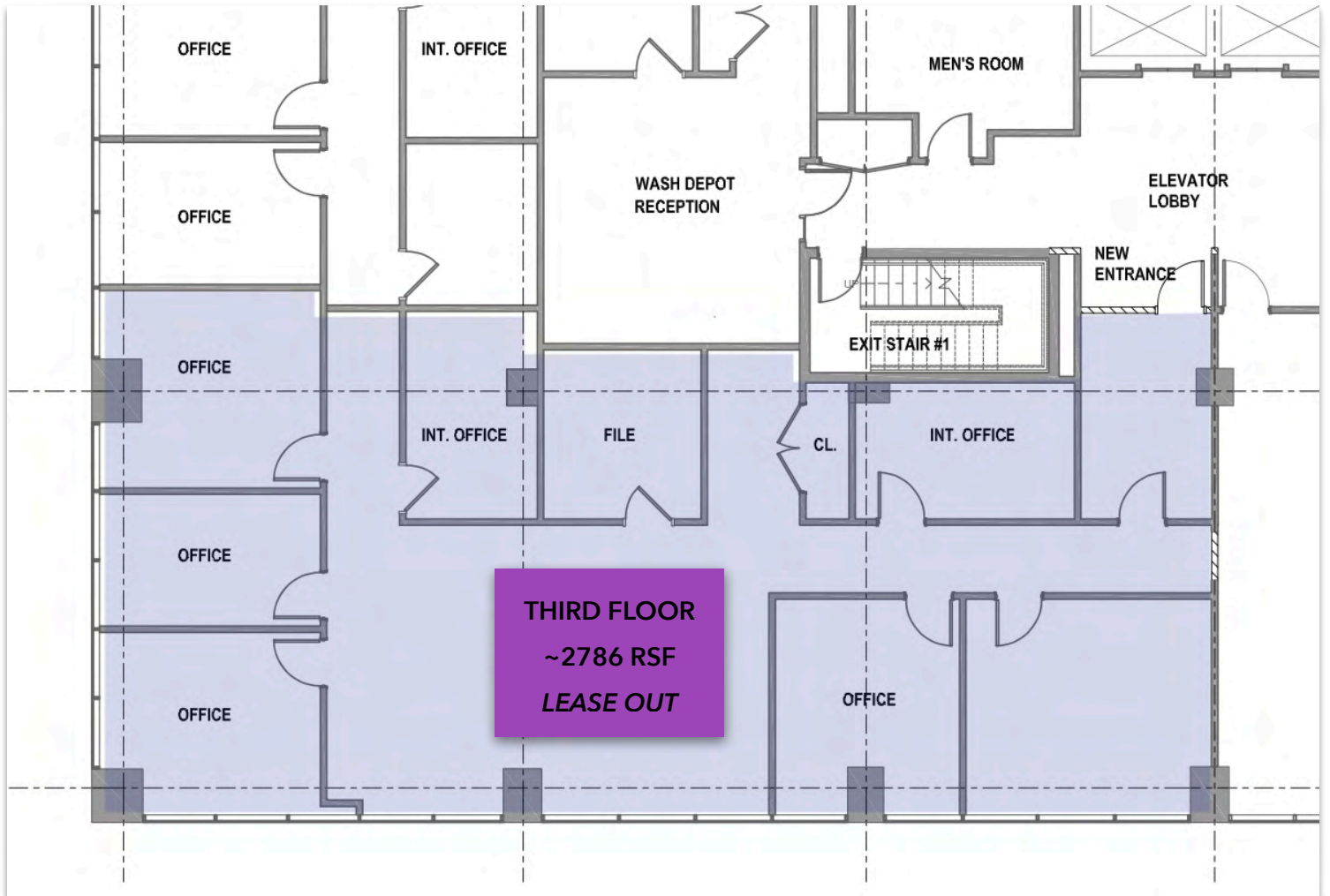


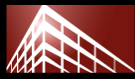
SECOND FLOOR PLAN



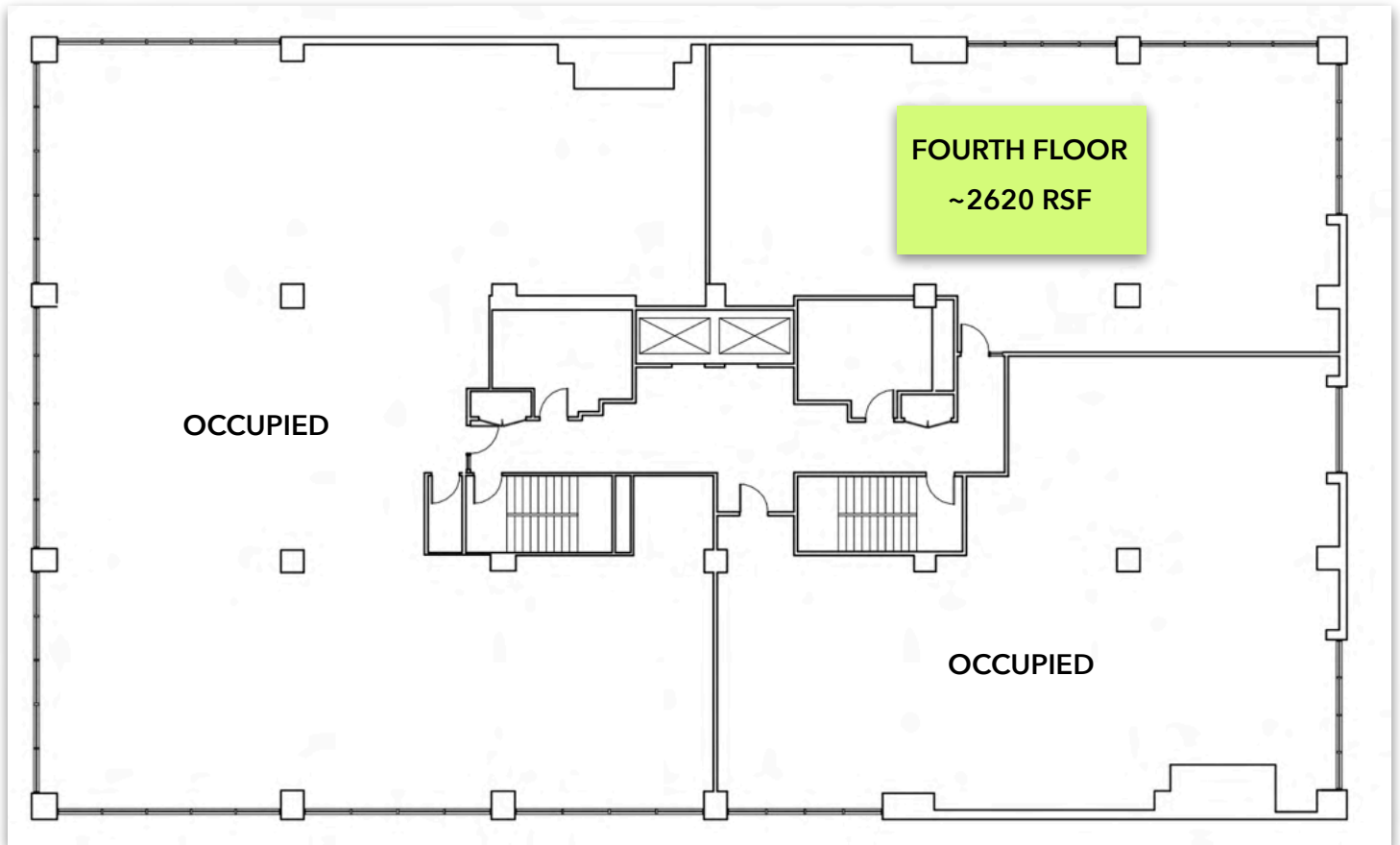


THIRD FLOOR PLAN



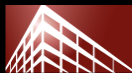


FOURTH FLOOR PLAN



Information contained herein is from sources deemed reliable, however no guarantee is provided as to the accuracy thereof and is subject to change without notice. Information contained herein is confidential and any use, distribution, copying or disclosure by anyone unauthorized is strictly prohibited.

Steve Nohrden, President
Steve@BurgessProperties.com



BURGESS
PROPERTIES

 Equity Residential